

MASONRY Laboratory Website

Lab 6 – Non-Destructive Evaluation

Lab

[Observation](#)

[Radar](#)

[Infrared Imaging](#)

[Cover Meter](#)

[Flatjack Testing](#)

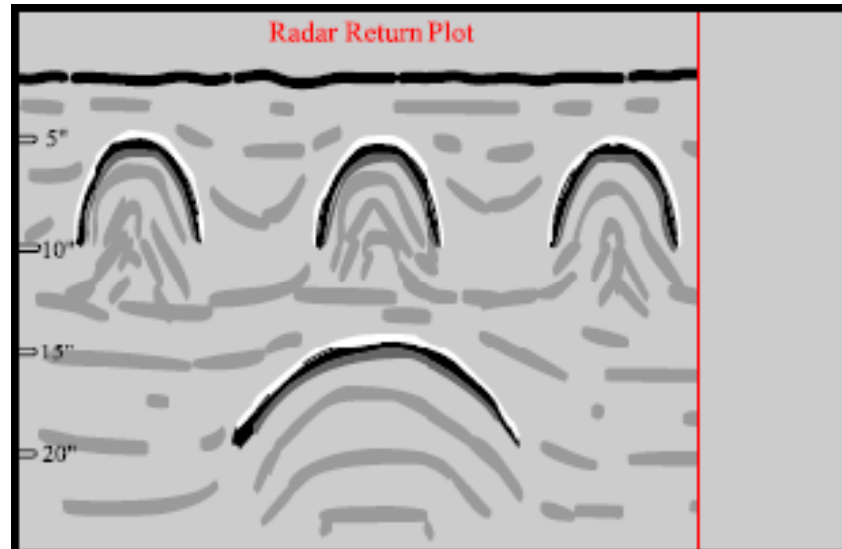
[Impact Echo](#)

Extras

[Lab Equipment and Materials](#)

[Extra Resources](#)

[Lab Worksheet](#)



General information:

Radar is used to establish the location of steel reinforcement within masonry. Radar units use a pulse of radiation emitted into a material and its return time and strength to measure distance to variations in the dielectric permittivity. The strength and time of the return depend on the magnitude of the difference in the dielectric permittivity and the depth to the anomaly. Radar returns are more complicated to read and require training of the reader if they are to be used correctly.